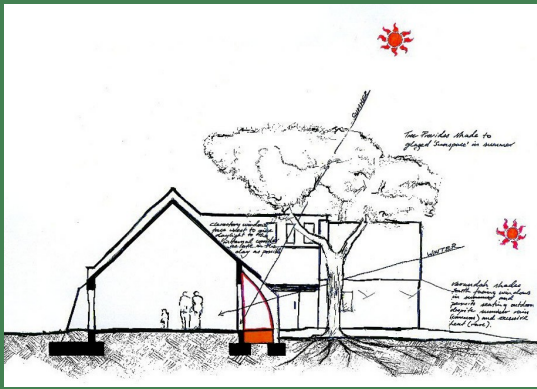


Northmoor Village's new Community Centre

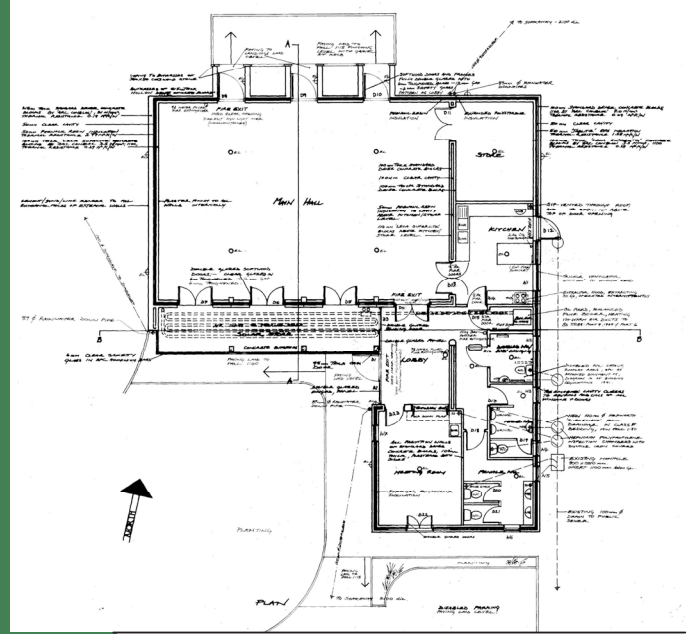


The first of its type in the UK, incorporating an innovative new solar heating system for Village Halls and Community Centres. The south facing glazed sun space not only allows an attractive view, but also acts like a greenhouse in trapping solar energy. The heat produced can be used directly by the building, or stored for later use. This works best in the spring and autumn, but even winter sun keeps the interior warmer than the outside air. To avoid overheating in summer, the building was positioned to allow an ash tree to shade the sun space.

This glazing and the large windows behind let in much daylight and low winter sun, reducing the need for artificial lighting. Energy use is further reduced by the use of highly economical low-energy lighting and water heating systems.

Overall, the building produces only one quarter of the volume of carbon dioxide of its conventional equivalent, and is estimated to use only half the energy. This of course reduces running costs and the level of charges to users.

We applied for, and successfully obtained, funding for the hall from the Millennium Commission and Shell Better Britain. We also gave detailed advice and assistance to the Village Hall Committee in their successful applications to the District and County Councils and The Rural Development Commission (now integrated into SEEDA).



NORTHMOOR VILLAGE HALL

Green by Design

OEx Ltd

